



Est. 1949



**The Laboratory Nursery School
Chetan Balwadi**

Department of Human Development
and Family Studies
Faculty of Family and Community Sciences
The Maharaja Sayajirao University of Baroda
Fatehgunj, University Road
Vadodara 390 002

Published by:

Chetan Balwadi - The Laboratory Nursery School

Department of Human Development and Family Studies

Faculty of Family and Community Sciences

The Maharaja Sayajirao University of Baroda

Vadodara

Copyright © 2001 Chetan Balwadi, All rights reserved

Printed at:

The Maharaja Sayajirao University of Baroda Press, Vadodara

Concept:

Chetan Balwadi

Ph. (0265) - 2792227 between 11 A.M. and 5 P.M.

E-mail: supdt-balwadi@msubaroda.ac.in

Compiled by:

Hina Mankodi

Jigisha Shastri

Sucheta Jasrai

Dhruti Mankodi

Staff Structure...

The staff in the Balwadi consists of the superintendent and supervisors who are teachers in the Department of HDFS. Each class consists of a class teacher and student trainees. Thus the adult - child ratio is 6:30.

The Balwadi is also equipped with a full time cook and ancillary staff.



The Balwadi is born...

The CHETAN BALWADI is a laboratory nursery school of the Department of Human Development and Family Studies, Faculty of Family and Community Sciences, The Maharaja Sayajirao University of Baroda. Since its inception in 1949, it has served as a premier institution in the field of early child development.

The main facets of Chetan Balwadi include a quality early child development program for children, training of professional and paraprofessional personnel and research.



The goals...

Designing and implementing a developmentally appropriate program for children.

Providing on field experiences and training to the undergraduate and postgraduate students of the department in the area of early childhood education.

Advocating the principles and practices of early child development and sensitizing professionals, parents and the community.

-

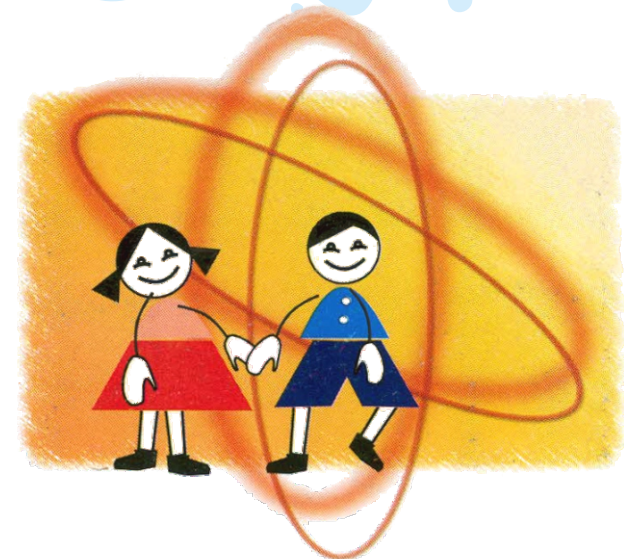


4

What do we believe in...

Chetan Balwadi follows the progressive philosophy of John Dewey. The curriculum is based on children's experiences, interest and need felt by the teachers. The approach is child centered. The program is activity based, encouraging exploration of the environment, opportunities for self expression, hands on concrete experiences within a meaningful and thematic context. The emphasis is on the process rather than the product.

There is an active effort at incorporating indigenous thoughts and practices across various curricular domains including but not restricted to Art, Music, Story and Song.



5

The first step...

Children in the age range of 3 to 4 years are eligible to apply. The first level screening is computerized in which a cross section of population representing different socio-economic groups, occupations, religions, languages spoken at home are screened.

Children visit the Balwadi with parents in small groups. They play with various resources and teachers observe them on gross indicators of development on the basis of specific criteria. The admission is open only at the entry point, based on the stipulated year of birth.



Our environment...

The laboratory school is housed in the Faculty of Family & Community Sciences building. It consists of three groups namely **Nursery**, **Junior KG** and **Senior KG**. Each room is adequately equipped with developmentally appropriate resources, furniture, display boards at children's eye level and individual drawers for older children. The environment is designed to support and facilitate the process of learning and development. In a class room the central region is generally for large group sessions and free movement. The adjoining area includes dollhouse, block play, manipulative, language, and science centres. This is to encourage free play and learning through children's own initiative.



Chetan Balwadi includes the reception cum office area, a music room to provide scope for creative movement and rhythmic activities.

The outdoor environment has the essential equipment to enhance gross motor skills. It is an enclosed area surrounded by different wings of the faculty building.

There is a large area for free play and vigorous movement. The Garden is a place for children to be with nature and explore various science experiences. The garden is equipped with different types of plants - medicinal, herbs, fruits, climbers and air purifying plants.



My team...

The superintendent and supervisors of each group are ECCE professionals and lecturers of the Department of Human Development and Family Studies. The training of students and the curriculum of each group is their responsibility. The nursery school teacher and the laboratory assistant have a Post Graduate Diploma in Early Childhood Care and Education or B.Sc. (Family and Community Sciences) in Human Development and Family Studies.

The teacher

- ◆ has autonomy in decision making
- ◆ has scope for innovation and experimentation
- ◆ is a facilitator and a guide to children
- ◆ is generally child friendly, and
- ◆ is sensitive to children's needs.



What do i learn...

The content is flexible and contextual. The teacher designs a flexible program based on children's interest, perceived needs in terms of time, content and strategies.

Developmental goals and areas provide guidelines for planning appropriate experiences. The program has scope for meeting individual needs of children.

It is an integrated curriculum consisting of Language, Maths, Science, Social Studies, Creative Arts, Music and Story.



10

How do i learn...

- Through first hand experiences that move from simple to complex, concrete to abstract, familiar to unfamiliar.
- In small group, large group and individually.
- Through field trips, active play, variety of activities, exploration and discovery which are interwoven into the program.

The teaching - learning strategies are designed to promote child-child, child-material and teacher-child interaction.



11

My Journey in the Balwadi...

Nursery

Nursery is the reception class of Chetan Balwadi. Children at their entry point are between 3 to 4 years of age. This is the beginning of a preschool and thus the focus is on the adjustment of children in the new set up. To facilitate the transition process the parents are specifically oriented prior to beginning school so that the new entrants could be prepared for the preschool. Initially for few days children are accompanied by their parents. To begin with, the program is for two hours, which gradually increases to regular three & a half hour program.



Junior KG

Junior KG program is for children from 4 to 5 years. This group serves as a bridge between the Reception group and the Kindergarten. A variety of experiences are provided to promote holistic development of children.

Senior KG

Senior KG children in the kindergarten program are 5 to 6 years old. In addition to the overall development of children, the program focuses on school readiness. Children begin to read and write meaningfully. Experiences are planned in arithmetic for counting, addition and subtraction with objects.



Music

The music room and its attractive environment encourages children to sing rhymes, dance to tunes with accessories like ribbons and scarves, engage in creative movements. Besides these, experiences of listening and auditory discrimination are planned. Children make their own songs and riddles.

Story

The favourite activity of children! Stories are told to children orally, through dramatization, use of flash cards, puppets, books, TV technique, and so on. Children are encouraged to create their own stories and dramatize.

School Readiness

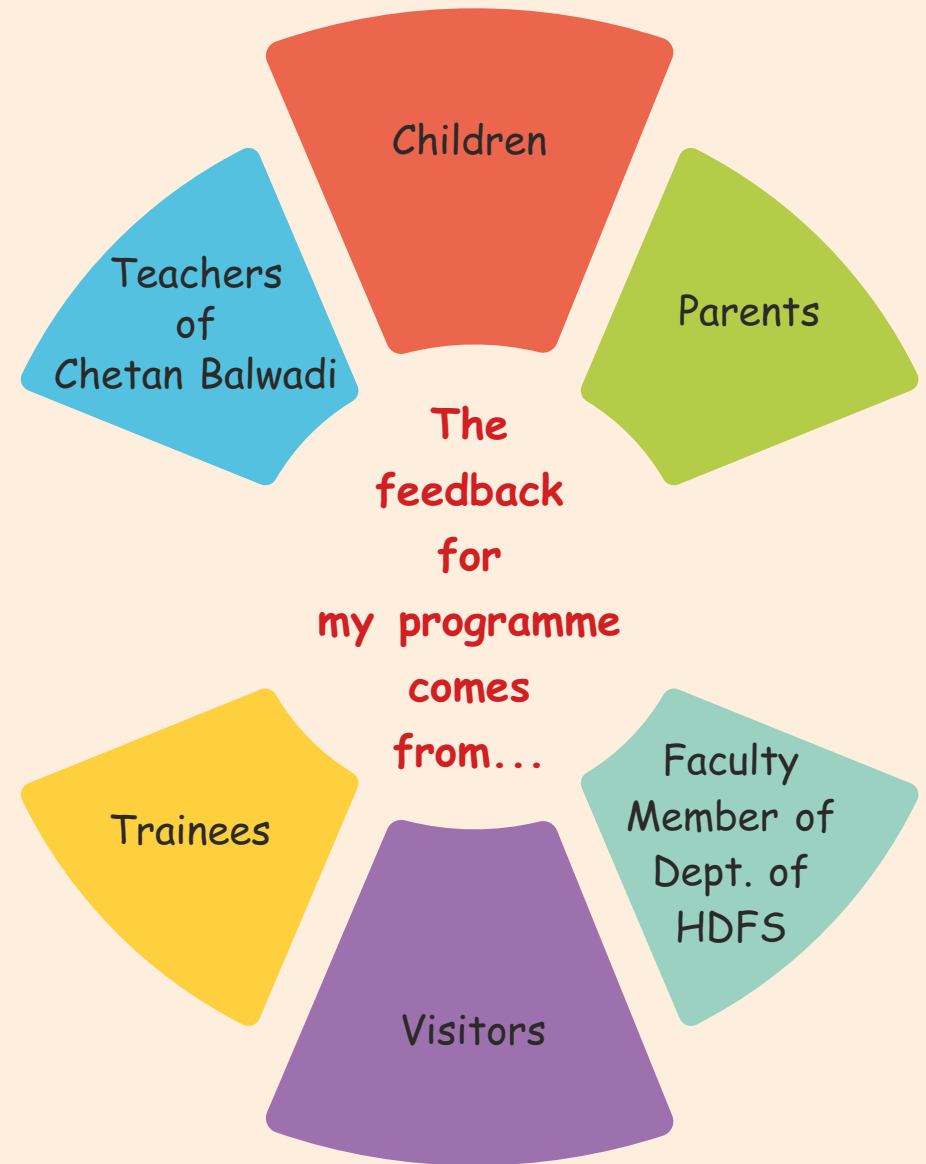
Graded experiences for school readiness are provided to Jr. and Sr. KG.

Food Program

Good nutrition is an important component of holistic child development. The balwadi program consists of an innovative 'Saathe Jamiye' breakfast program, where children bring snacks from home and learn to share food with their peers. Balwadi has a fully equipped kitchen where healthy, nutritionally balanced brunch is prepared for children on a daily basis. Teachers personally supervise the snacks and lunch times of children and model good eating habits like eating in a quiet environment, not wasting food and water and waiting for turns.

Unique Yearly Activities

Graduation Function, Doctor's Visits, Picnic, Sports day, Festival Celebrations, Field Trips, Science Experiments, Cooking Experiences, Visits of Resource Persons/Experts



Assessment in my Balwadi...

Assessment in the lab school is:

- Pressure free
- Developmentally appropriate
- Ongoing
- Inbuilt into the program
- Once a semester
- Shared with parents every semester



My teacher knows me through...

- Teacher's day to day observation
- Anecdotal records
- Portfolio
- Developmental checklist
- Cumulative record
- Ongoing assessment of children
- Qualitative information of the children's behavior
- Actual work samples
- Developmental status of children
- Comprehensive profile of each child.

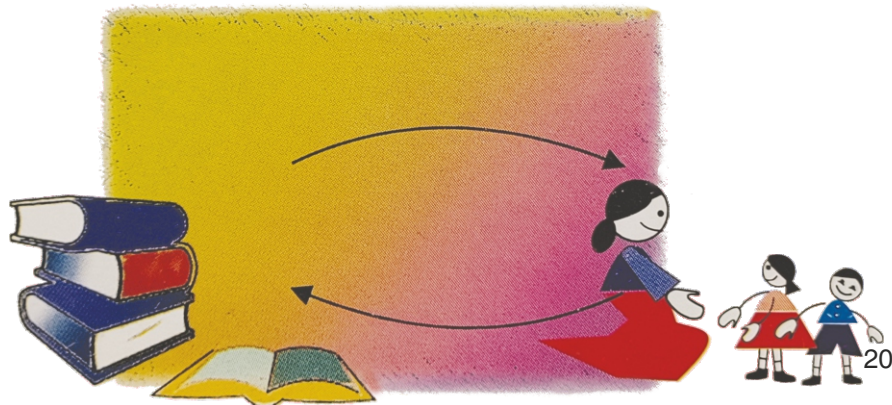


Student training...

A major thrust of Chetan Balwadi is the component of student training. The undergraduate and the post graduate students pursuing Degree and Diploma courses offered by the Department of Human Development and Family Studies have their fieldwork placement in the laboratory nursery school.

The focus is on understanding the link between theory and practice. Reflective observations, concrete first hand experiences and planning, implementing and evaluating program for children form the core of the training. The senior Master students get exposed to the supervision process.

The laboratory nursery school team conducts regular weekly meetings with students to discuss their plans, individual needs of children, student's concern and overall evaluation and feedback.



Parent programme...

Parent Teacher Association

Chetan Balwadi school has an active Parent Teacher Association (PTA). Parent volunteers enthusiastically participate in various activities of the Balwadi and this further strengthens the Home and School teaching-learning environments.

Parent involvement and interaction with them is an integral part of Chetan Balwadi program. The focus of the parent program is capacity building through

- strengthening knowledge base and
- helping them understand their children better.

This is done through individual and group meetings, workshops, panel discussions, video viewing.

Parents are encouraged to participate in celebration of special events and festivals.



Research...

Research forms an inbuilt component of the Chetan Balwadi Program. The major areas of research include curriculum development, assessment, integration of children with special needs, perception of family on current issues such as 'Pressures on Children' and integration of pre primary and early primary program.



Advocacy...

Chetan Balwadi advocates the principles and practices of Early Child Development through:

- organization and participation in open houses
- training of professionals and para professionals through workshops, refresher programs.

The faculty contribute as resource persons for talks, workshops, panel discussions and seminars for parents of other organizations, schools, NGOs and community at large.



Chetan Balwadi app - A step towards digitalization...

A step towards digitalization was initiated by Chetan Balwadi alumni, Sumedh Kapadia and Aaditya Kapadia who created the official Chetan Balwadi-MSU app on Google play store to help young children learn various basic concepts, stories, songs etc. The app is first of its kind in Gujarati language.

The app will be officially launched in 2021. To download the app scan the QR code or follow the link given below.



[https://play.google.com/store/apps/developer?id=Chetan+B
alwadi+-+MSUBaroda](https://play.google.com/store/apps/developer?id=Chetan+B%20alwadi+-+MSUBaroda)

